

FLEX/INDUSTRIAL
FOR LEASE

International Corporate Center

11815 NE Glenn Widing Drive, Portland, OR 97220
Building E



Key Features



13,733 sq. ft. shell



9,614 sq. ft. office



1 grade door

14' clear height

Upgraded, modern finishes

LED lighting throughout

Each restroom equipped
with showers

Ability for 53' trailers

Excellent access to
I-205, I-84 and Portland
International Airport

Lease Rate:

\$20.00/sq. ft./yr. NNN

Jake Bigby

jakeb@pactrust.com

Caitlin Knecht

caitlink@pactrust.com

503.624.6300

Owned & Managed by

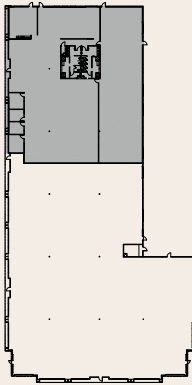
PACTRUST

© 2024 PacTrust. All information supplied herein, including but not limited to measurements, dimensions, and specifications, is deemed reliable but is not guaranteed and should be independently verified. Any reliance on the information contained herein is at the user's own risk.

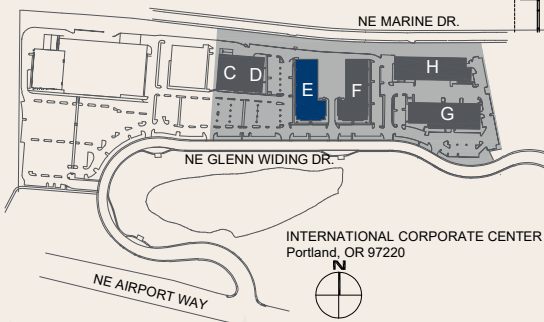
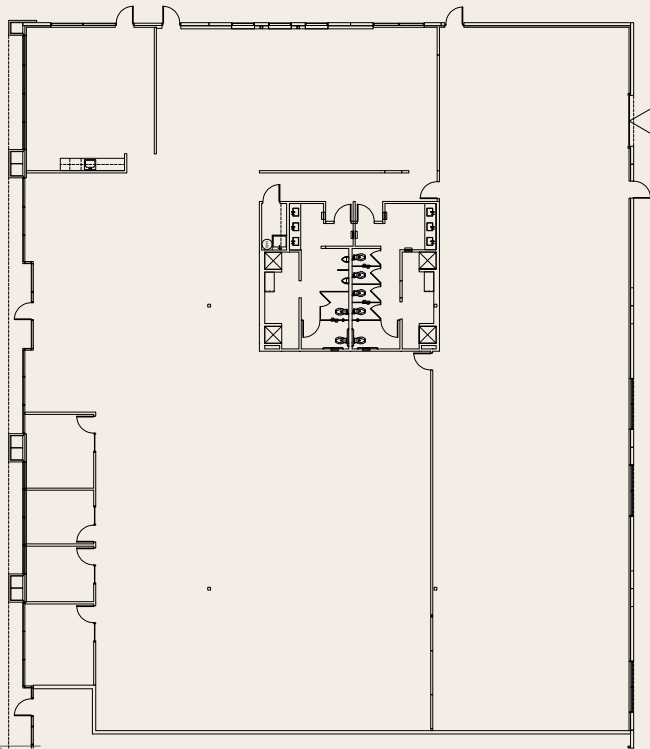
Space Plan

11815 NE Glenn Widing Drive, Portland, OR 97220

13,733 Sq. Ft.



BUILDING PLAN



- ▽ GRADE ACCESS
- ▼ DOCK ACCESS

Jake Bigby
jakeb@pactrust.com

Caitlin Knecht
caitlink@pactrust.com

503.624.6300
www.PacTrust.com